

Color Temperature:



Total Lumen Output:
10740 lm

Light Quality:

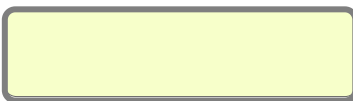


Peak:
50556 cd

Light Efficiency:



Power: 416 W



CIE 1931
x: 0.350
y: 0.369

Test: CRI Value

Date: 10/17/2018

Voltage: 115 V

Current: 3.62 A

Frequency: 60 Hz

CRI: 90.6

CQS: 91.7

TM30: 88.3

Note:

R @ 139

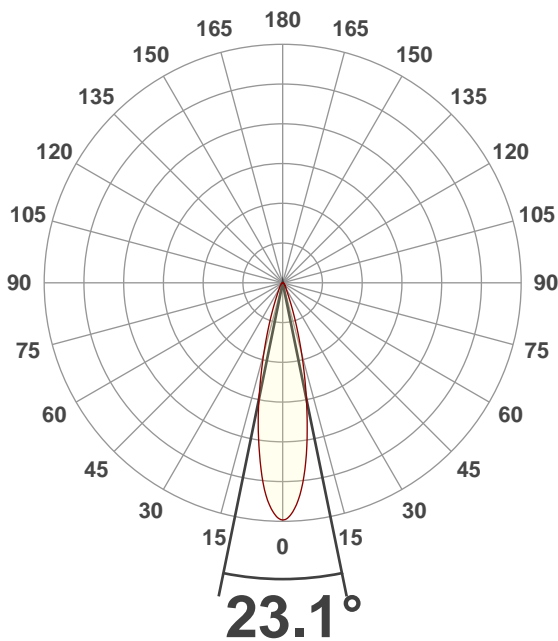
G @ 125

B @ 54

W @ 255

A @ 255

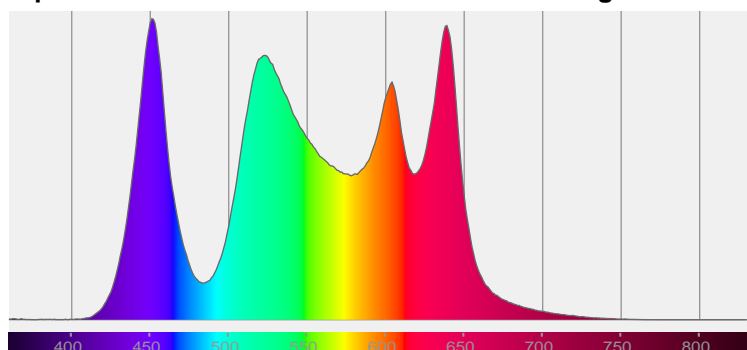
Beam Angle



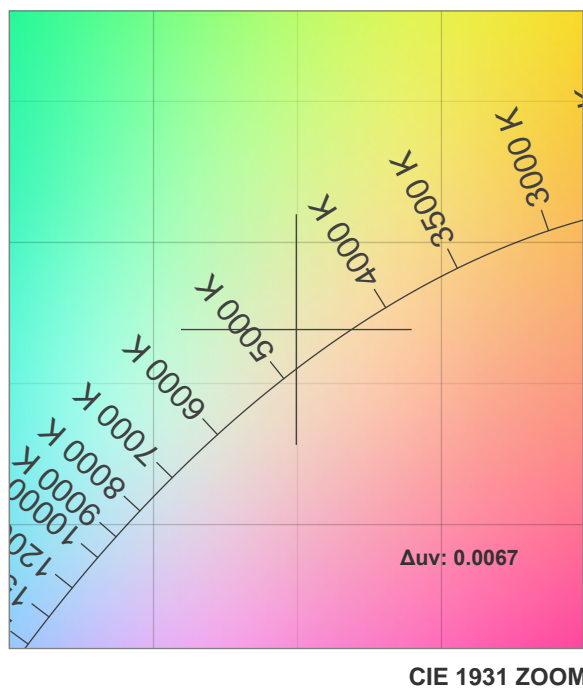
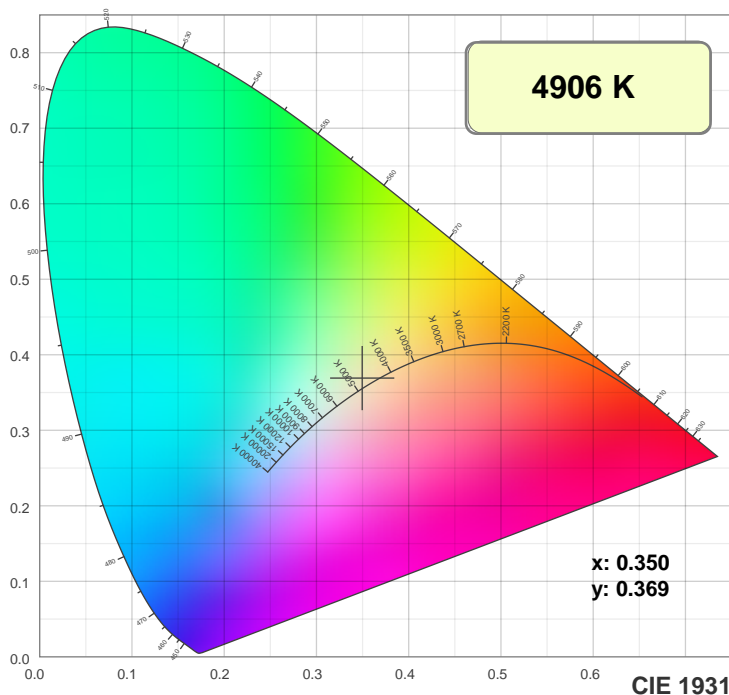
Beam Angle 50%	Field Angle 10%	Cutoff Angle 2.5%
23.1°	42.3°	64.6°

Spectra

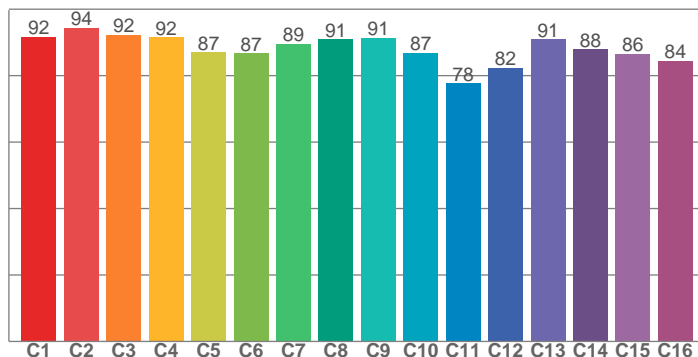
Dominant Wavelength: 576nm



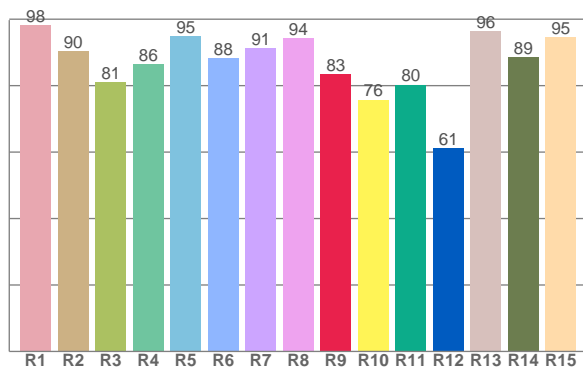
Color Details



TM30: 88.3



CRI: 90.6 (R1-R8)



CRI R values, only R1-R8 are used to calculate final CRI value

R1	R2	R3	R4	R5	R6	R7	R8	R9	R10	R11	R12	R13	R14	R15
98.3	90.3	81.1	86.4	94.9	88.3	91.2	94.3	83.4	75.8	80.3	61.2	96.4	88.6	94.6

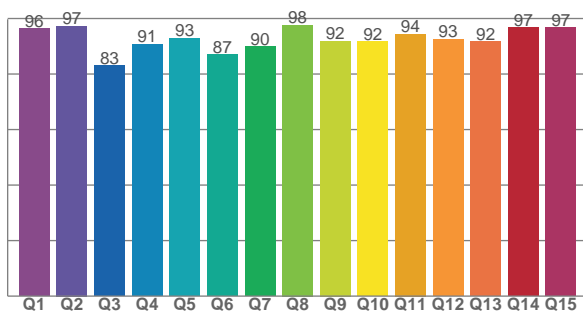
TM30 C Values, 16 binned values out of total of 99 C values

C1	C2	C3	C4	C5	C6	C7	C8	C9	C10	C11	C12	C13	C14	C15	C16
91.7	94.4	92.3	91.5	87.0	86.7	89.5	90.9	91.3	86.9	77.7	82.3	90.9	87.9	86.5	84.5

QQS Q Values

Q1	Q2	Q3	Q4	Q5	Q6	Q7	Q8	Q9	Q10	Q11	Q12	Q13	Q14	Q15
96.3	97.3	83.1	90.7	92.9	87.0	90.0	97.7	91.9	91.6	94.4	92.6	91.7	96.7	96.8

CQS: 91.7



Color Parameters

Color Temperature	Color Rendering Index	Red Component	Color Fidelity	Color Gamut	Color Quality Scale	Color Coordinate CIE 1931	Color Coordinate CIE 1931	Color Coordinate	Color Coordinate	Color Deviation from Black Body
CCT	CRI	CRI R9	TM30 Rf	TM30 Rg	CQS	x	y	u	v	Δuv
4906 K	90.6	83.4	88.3	103.8	91.7	0.350	0.369	0.208	0.329	0.0067

TM30 Details

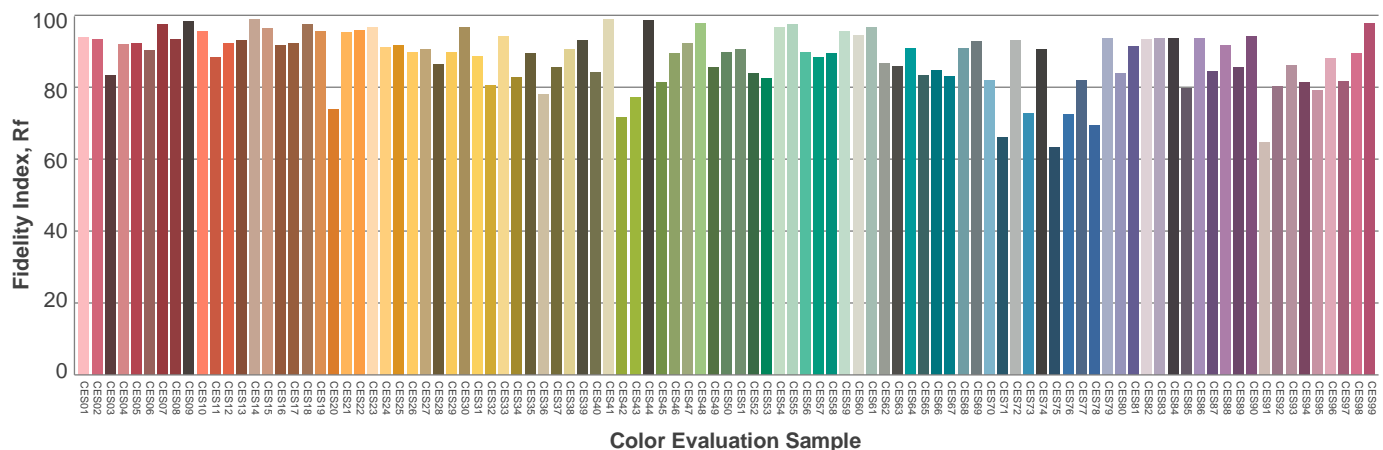
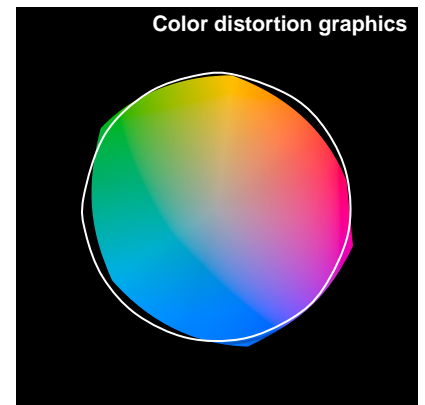
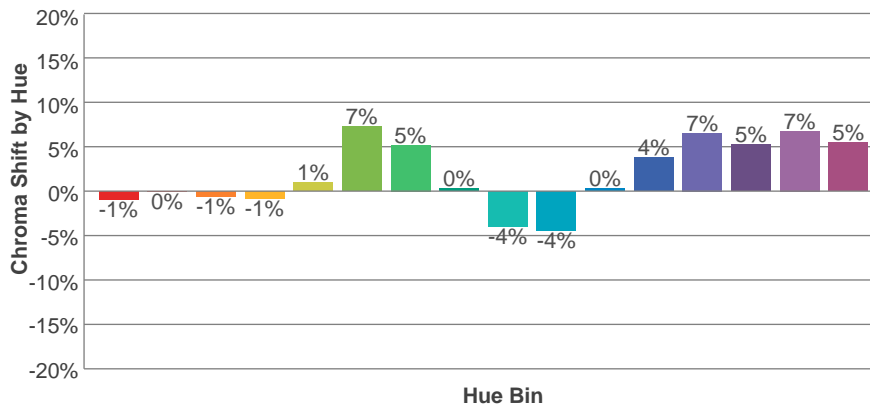
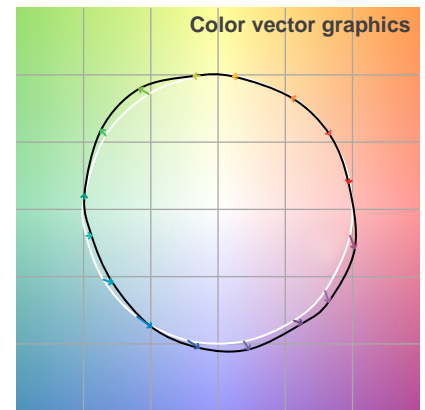
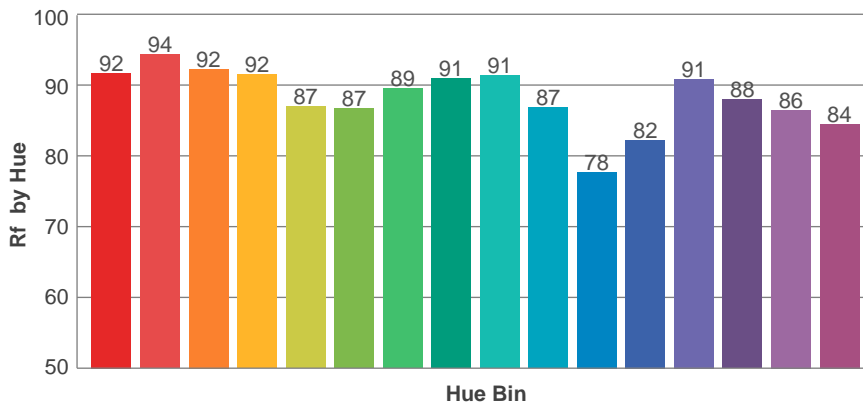
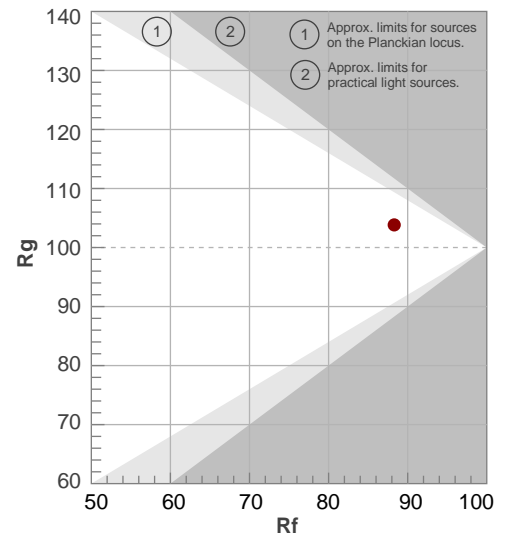
Rf 88.3

Fidelity Index Rf

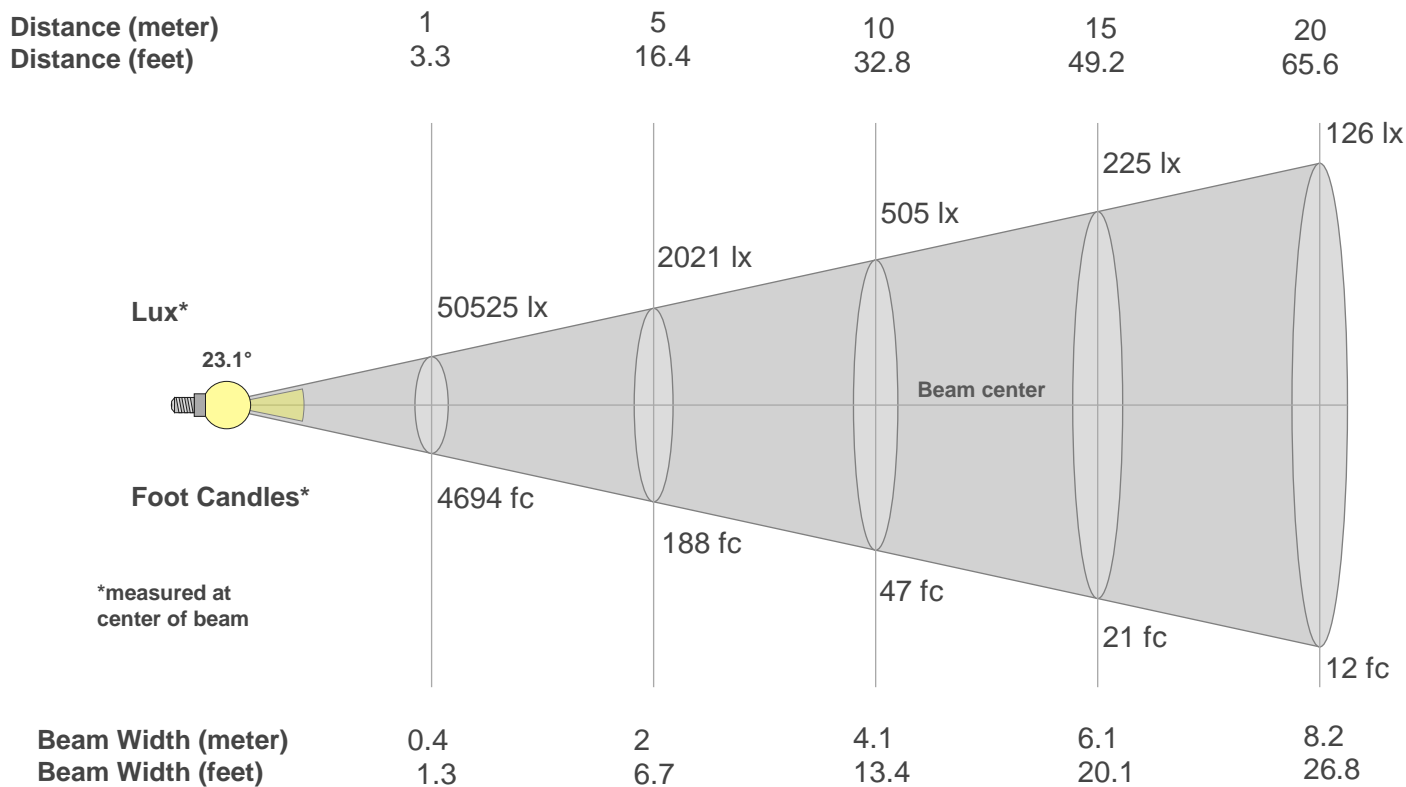
Rg 103.8

Gamut Index Rg

Hue Bin	R _f	Graphic shifts (%)	
		Chroma	Hue
1	92	-1%	-3%
2	94	0%	-1%
3	92	-1%	2%
4	92	-1%	4%
5	87	1%	5%
6	87	7%	4%
7	89	5%	-2%
8	91	0%	-3%
9	91	-4%	1%
10	87	-4%	6%
11	78	0%	13%
12	82	4%	9%
13	91	7%	3%
14	88	5%	4%
15	86	7%	-5%
16	84	5%	-8%



Beam Details



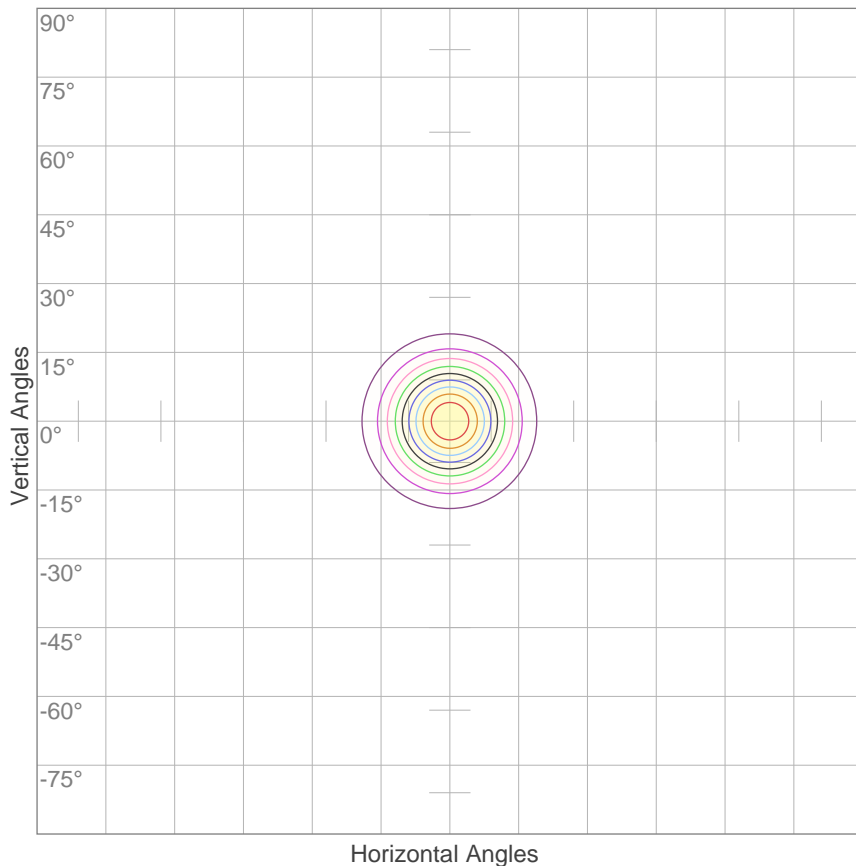
Beam Intensities from 1-20m

m	1	2	3	4	5	6	7	8	9	10	11	12	13	14	15	16	17	18	19	20
ft	3.3	6.6	9.8	13.1	16.4	19.7	23	26.2	29.5	32.8	36.1	39.4	42.7	45.9	49.2	52.5	55.8	59.1	62.3	65.6
lx	50525	12631	5614	3158	2021	1403	1031	789	624	505	418	351	299	258	225	197	175	156	140	126
fc	4693.9	1173.5	521.5	293.4	187.8	130.4	95.8	73.3	57.9	46.9	38.8	32.6	27.8	23.9	20.9	18.3	16.2	14.5	13	11.7

Beam Angle 50%	Field Angle 10%	Cutoff Angle 2,5%	Intensity Ratio in 120° Cone	Intensity Ratio in 90° Cone
23.1°	42.3°	64.6°	99.7%	96.2%

ISO Diagrams

ISO Candela Diagram



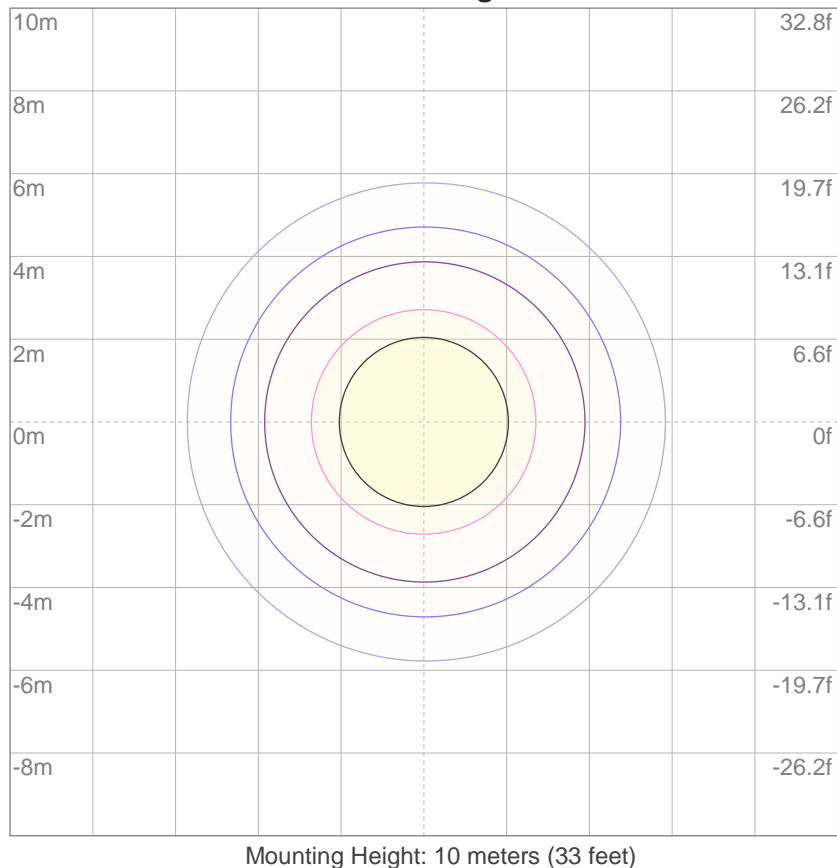
10%	5052 cd
20%	10105 cd
30%	15157 cd
40%	20210 cd
50%	25262 cd
60%	30315 cd
70%	35367 cd
80%	40420 cd
90%	45472 cd

Conditions:

Number of c-planes: 2

Candela at center: 50525 cd

ISO Lux Diagram



3%	15.2 lx
5%	25.3 lx
10%	50.5 lx
30%	152 lx
50%	253 lx

Conditions:

Number of c-planes: 2

Lux at center: 505 lx

Lux distribution on a surface when lamp is mounted at 10 meters from the surface.